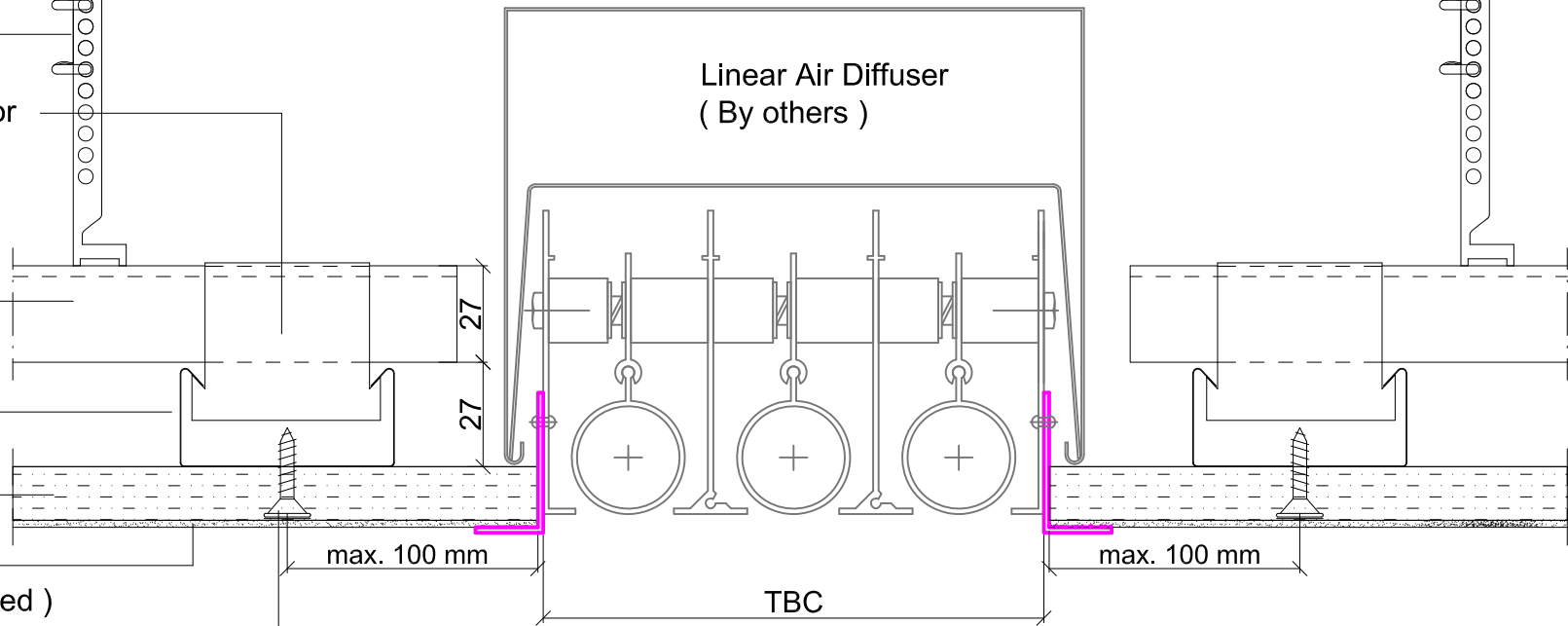


Refer to manufacturers technical data  
for support recommendations

- Sto Nonius Hanger  
( 07989-012 )
- Sto Braced Cross Connector  
( 07989-015 )
- Sto Primary Channel  
( 07989-076 )
- Sto Secondary Channel  
( 07989-076 )
- Sto Acoustic Board  
( 15mm or 25mm thick  
as specified )
- Sto Acoustic Finish  
( Decor M or Top as specified )
- Coated dry wall screws  
or Stainless Steel self-tappers



**Note :**  
**( Epoxy powder ( EP ) coated metalwork and suitable board screws required for C4 and C5 environments to EN 12944  
 ( E.g. swimming pools , semi-exposed locations, etc )**

|            |                         |
|------------|-------------------------|
| Drawn by:  | M.Shepherd: 23/06/11    |
| Scale: NTS | Revision date: 12/02/20 |

**StoSilent Distance Acoustic System**

**Title:**  
**Sto-SC400 Braced Suspension Grid**  
**Linear Air Diffuser - Ceiling Section**

**Sto Ltd**  
 2 Gordon Avenue  
 Hillington Park  
 Glasgow G52 4TG  
 Tel: +44 (0)141 892 8000  
 Fax: +44 (0)141 404 9001  
 E-mail: info.uk@sto.com

Notice:  
 Neighbouring works are represented only schematically.  
 This detail is a proposal which describes the basic function of the StoSilent Distance Acoustic System.  
 The detail solution does not result in any liability for the company Sto Ltd. As the specific nature of the project in question was not known, no allowance is made for it in the solution. If necessary, the solution must be modified by a suitably trained Architect / Planner / Contract Administrator / Applicator after examining the project and local conditions as well as all construction law and other rules and regulations ( e.g. Fire protection , physical properties, technical principles etc. ) Use of this solution does not absolve the Architect / Planner / Contract Administrator / Applicator / User of their duty to examine local conditions and to observe any applicable rules and regulations.

|                    |        |
|--------------------|--------|
| Drg Ref: SC400_106 | Rev: B |
|--------------------|--------|