

acoustic system

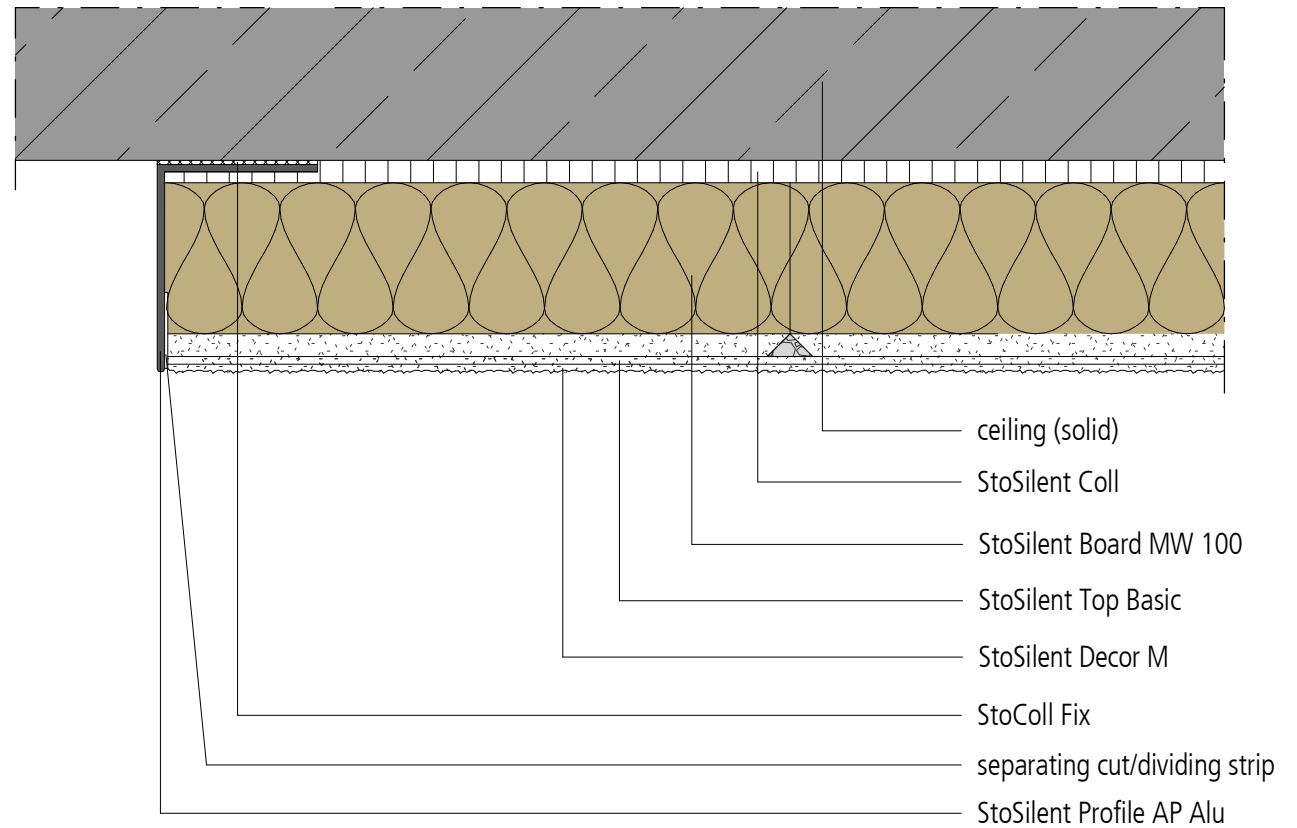
Ceiling (section): connection to a partially insulated ceiling with angle profile

StoSilent Direct

Rev. no. 2015/01/01

STO-HQ-DE

SSD-1110



Note: The substrate must be flow-proof, smooth, load-bearing, clean, dry, and free from sinter layers, efflorescence and release agents. Check existing coatings for their suitability and load-bearing capacity. Grind, dust off, and prime any sinter skin with StoPrim Plex. Then coat with StoSilent Prep Quarz as an intermediate coat. This is mandatory for critical substrates or those containing gypsum.

Note: This drawing is a general, non-binding planning suggestion which depicts the execution only schematically. The applicator/planner/customer is independently responsible for determining the suitability and completeness of the product for the particular construction project. Neighbouring works are described only schematically. All specifications and assumptions must be adjusted or agreed in the light of local conditions. Compliance with the technical specifications contained in the Technical Data Sheets, application guidelines, and system approvals is mandatory.