

## **Sto-Brick Slips**

For a classic brick appearance on  
Sto facade systems

# Traditional design

Many regions in the UK and Ireland are dominated by brick buildings, being both a traditional and trusted building material.

Planning authorities can dictate that the design of new buildings matches the appearance of existing buildings in the area.

Sto-Brick Slips are manufactured from acrylic render to simulate brickwork, and are compatible with all Sto facade systems.

When used as a finish on an external wall insulation system such as StoTherm Classic, you can match the design of existing buildings without having to compromise on modern insulation requirements.





## Why use Sto-Brick Slips?

- Sto-Brick Slips add a charming brick appearance to facade systems with individual hand finishing.
- Ideal for new build and refurbishment projects.
- Not limited to standard brick appearance. Any of the 800 colours in the StoColor System can be achieved.
- Through-coloured and light-fast, providing for a long life span and low maintenance costs.
- Compatible with all Sto external wall insulation, rainscreen cladding and render-only systems, providing levelling, reinforcement and insulation with a classic brick appearance.
- Weather resistant and vapour permeable.
- Resistant to impacts and mechanical stress.



# Sto-Brick Slips in colours to suit

Sto-Brick Slips are available in six standard colours. They can also be manufactured to custom colours in order to match existing brickwork, or to create a unique brick appearance facade in any of the 800 colours of the StoColor System.



**2078 B: Edinburgh**



**2079 B: Truro**



**2080 B: Dublin**



**2081 B: Cardiff**



**2082 B: Sutton**



**2083 B: Leeds**

Sto-Adhesive and Pointing Mortar is available in six colours, allowing for a wide variety of designs that suit your project requirements.



**2056 A: White**



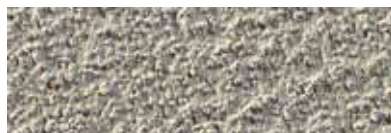
**2057 A: Anthracite**



**2059 A: Light Grey**



**2060 A: Grey**



**2062 A: Sand**



**2063 A: Brown-Grey**

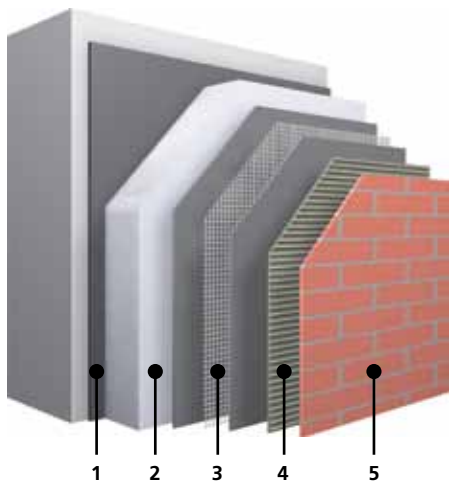
## Note on colour accuracy:

Even the highest print quality cannot guarantee exact colour replication. These colours are provided for reference only. For an accurate colour reference, please contact Sto for a sample.



# StoTherm Classic with Sto-Brick Slips

Sto-Brick Slips can be used in conjunction with the StoTherm external wall insulation system on blockwork/brickwork or steel frame.



- 1. Adhesive: StoLevel Uni, Sto-Dispersion Adhesive or Sto-Turbofix**  
Hard-setting adhesives for applying insulation directly to the substrate. Additional dowelling may be required.
- 2. Insulation: Sto-EPS Board**  
HCFC-free expanded polystyrene boards. Available in standard thicknesses from 20-200mm, so very low U-Values can easily be achieved.
- 3. Reinforcement: StoArmat Classic with Sto-Glass Fibre Mesh**  
Cement-free reinforcing render with a glass fibre mesh embedded during application for exceptional crack and impact resistance.
- 4. Sto-Adhesive and Pointing Mortar**  
Acrylic based adhesive mortar for Sto-Brick Slips.
- 5. Sto-Brick Slips**  
Acrylic resin brick appearance slips, available in 6 standard colours or custom made in any of the 800 colours of the StoColor System.



**At Roland House, Sto-Brick Slips were matched to existing brickwork, and applied to the StoTherm Classic system onto a lightweight steel frame structure.**

# Design freedom with Sto-Brick Slips

StoTherm Classic with Sto-Brick Slips allows brick buildings to be restored to their former glory.

For improved thermal insulation and economic reasons, why not build commercial and residential properties using a Sto rendered external wall insulation system with accents of brick slips, rather than build in brick and add render later?

With the help of the StoDesign team, many interesting and varied design effects can be achieved using special colours, unusual surface finishes and by combining Sto-Brick Slips with rendered surfaces.



# Application method for Sto-Brick Slips



**1.** The first step in correct application of Sto brick slips, is the careful setting out of the area to which they are to be applied.



**2.** After setting out the divisions, begin at the top. Apply Sto-Adhesive and Pointing Mortar horizontally with the 6x6mm Sto-Toothed Trowel at the external corners. Embed the corner pieces firmly in the mortar, ensuring that they are offset.



**3.** Apply Sto-Adhesive and Pointing Mortar at the same height as the corner pieces to an area of approximately 1m<sup>2</sup>.



**4.** Stretch a cord along the height of application. To replicate the appearance of bricks, the colour of Sto-Brick Slips vary slightly. To ensure a uniform appearance, take the slips randomly from different cartons and press them into the Sto-Adhesive and Pointing Mortar.



**5.** Smooth the joints with a damp brush or pointing tool. Ensure that the Sto-Brick Slips are fully embedded in the mortar on all sides.



**6.** Carefully thought-out connections to all features, such as windows and doors, complete the system. Lintels should be finished as soldier courses with corner pieces.

**Sto Ltd.**

**Head office**

2 Gordon Avenue

Hillington Park

Glasgow G52 4TG

Tel +44 (0)141 892 8000

Fax +44 (0)141 404 9001

**Southern office**

Antura, Kingsland Business Park

Wade Road

Basingstoke RG24 8EN

Tel +44 (0)1256 332770

Fax +44 (0)1256 810887

**Ireland office**

Unit 3, Robinhood Business Park

Robinhood Road

Dublin 12

Tel +353 (0)1460 2305

Fax +353 (0)1460 2455

[info.uk@sto.eu.com](mailto:info.uk@sto.eu.com)

[sto.co.uk](http://sto.co.uk)

[sto.ie](http://sto.ie)

[stoshop.co.uk](http://stoshop.co.uk)